

BreMiNo Group



Limited Liability Company
«Bremino Group»
 («Bremino Group» LLC)
office 303, Nemiga str., 40,
Minsk, 220004,
Republic of Belarus
tel. +375 17 200 0770
office@bremino.by
bremino.by

BreMiNo Group



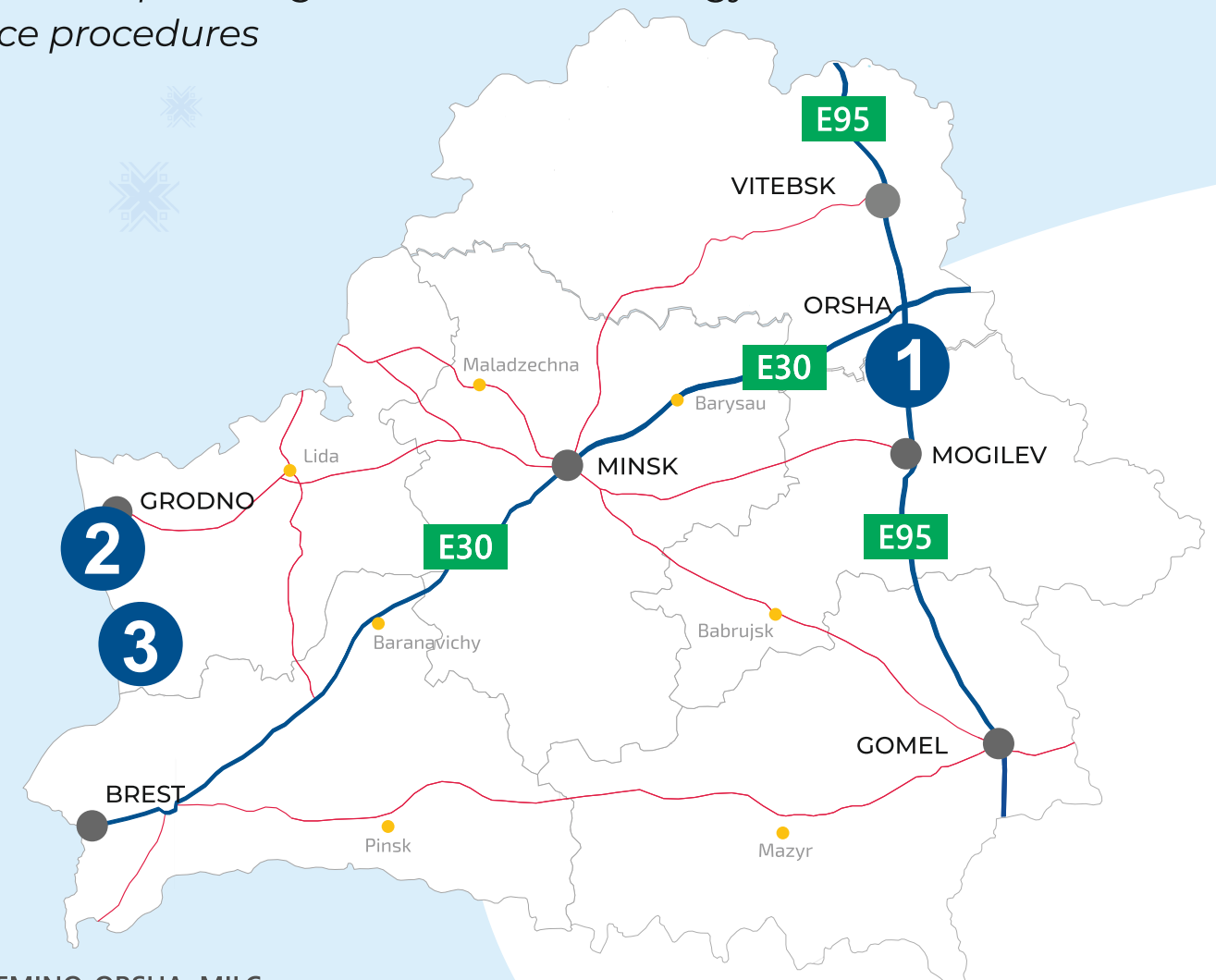
www.bremino.by

BreMiNo Group

Bremino Group is a leading logistics operator in the Republic of Belarus

The company develops modern logistics infrastructure and offers all-inclusive servicing in the customs and warehousing logistics

Our logistics terminals are located in Belarus - Poland and Belarus - Russia borders providing free transit technology and fast customs clearance procedures



1

BREMINO-ORSHA, MILC:

TOTAL AREA IS 230 ha.

TYPE OF DELIVERY: by truck, by rail, by air

2

BREMINO-BRUZGHI, TLC:

TOTAL AREA IS 10 ha.

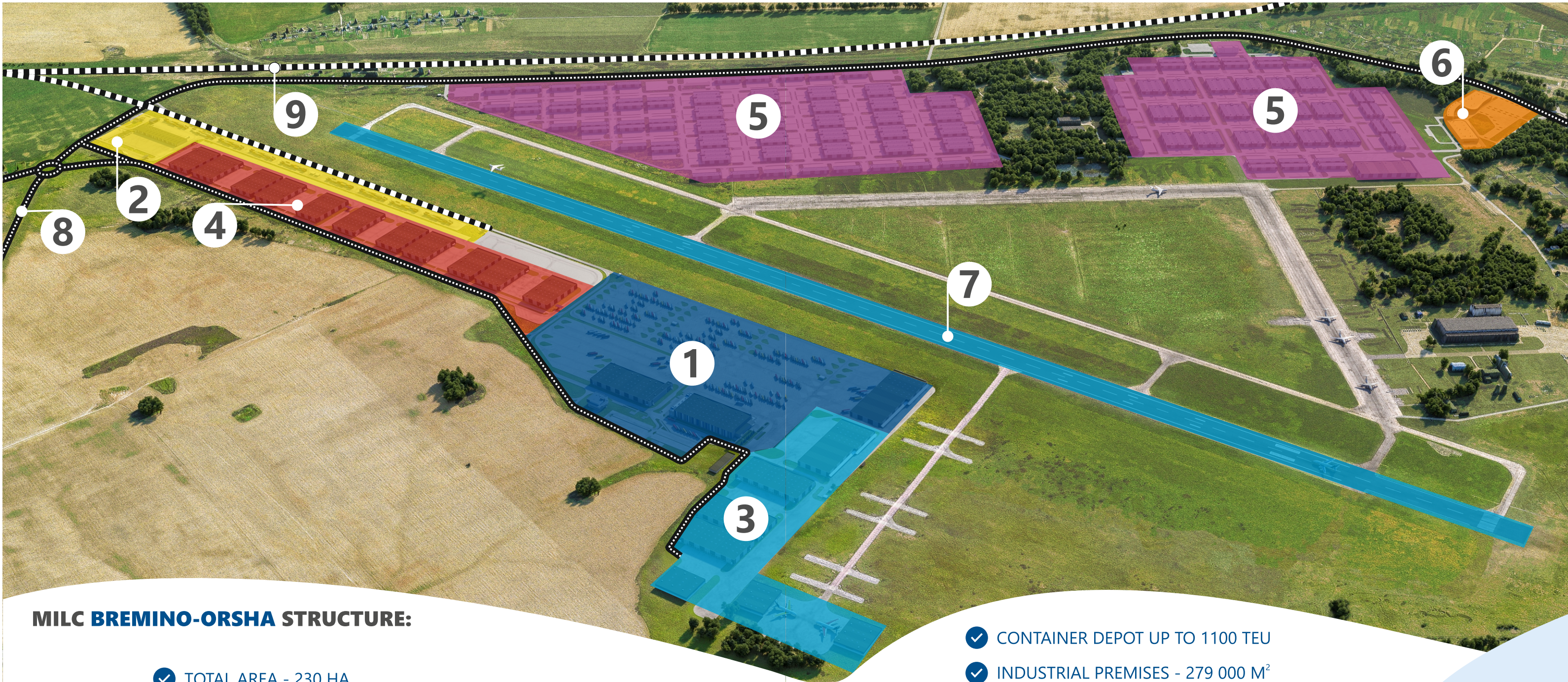
TYPE OF DELIVERY: by truck

3

BREMINO-BERESTOVITSA, TLC:

TOTAL AREA IS 7.5 ha.

TYPE OF DELIVERY: by truck



MILC BREMINO-ORSHA STRUCTURE:

- ✓ TOTAL AREA - 230 HA
- ✓ WAREHOUSES FOR 192 000 M²
- ✓ PARKING UP TO 1700 TRUCKS

- ✓ CONTAINER DEPOT UP TO 1100 TEU
- ✓ INDUSTRIAL PREMISES - 279 000 M²
- ✓ COMMERCIAL SECTOR UP TO 9 000 M² FOR SHOWROOMS
- ✓ OFFICES UP TO 17 000 M²

- ① TRUCK TERMINAL
- ② RAILWAY TERMINAL
- ③ AIR CARGO TERMINAL
- ④ LIGHT INDUSTRIAL MODULES

- ⑤ INDUSTRIAL ZONE
- ⑥ BUSINESS SECTOR

- ⑦ ORSHA INTERNATIONAL CARGO AIRFIELD
- ⑧ ACCESS TO **E30 / E95** HIGHWAY
- ⑨ INTERNATIONAL RAILWAY LINE

1



TRUCK TERMINAL

INNOVATIONS IN LOGISTICS!



A - CLASS WAREHOUSE UP TO 20 000 M²
(including public warehouse / bonded warehouse / temporary storage)



15 CARGO RAMPS ARE LOCATED IN THE CUSTOMS ZONE



NEWEST LOADING EQUIPMENT



AVAILABILITY OF BORDER , CUSTOMS, PHYTO AND VETERINARY CONTROL ONSITE



**OPEN-SURFACED STORAGE,
CAPACITY FOR PARKING - UP TO 100 TRUCKS**



24/7 WORKING HOURS OF WAREHOUSE AND CONTROLLING BODIES
(including weekends and public holidays)



BANK BRANCH AND OTHER SERVICE PROVIDERS



OFFICES

2



Bremino Group train
regularity is twice a week

RAILWAY TERMINAL



60 000 TEU / YEAR CAPACITY



RELOADING OF CONTAINERS FROM TRAIN TO TRUCK



STORAGE IN CONTAINER DEPOT



REEFER CONTAINER HANDLING



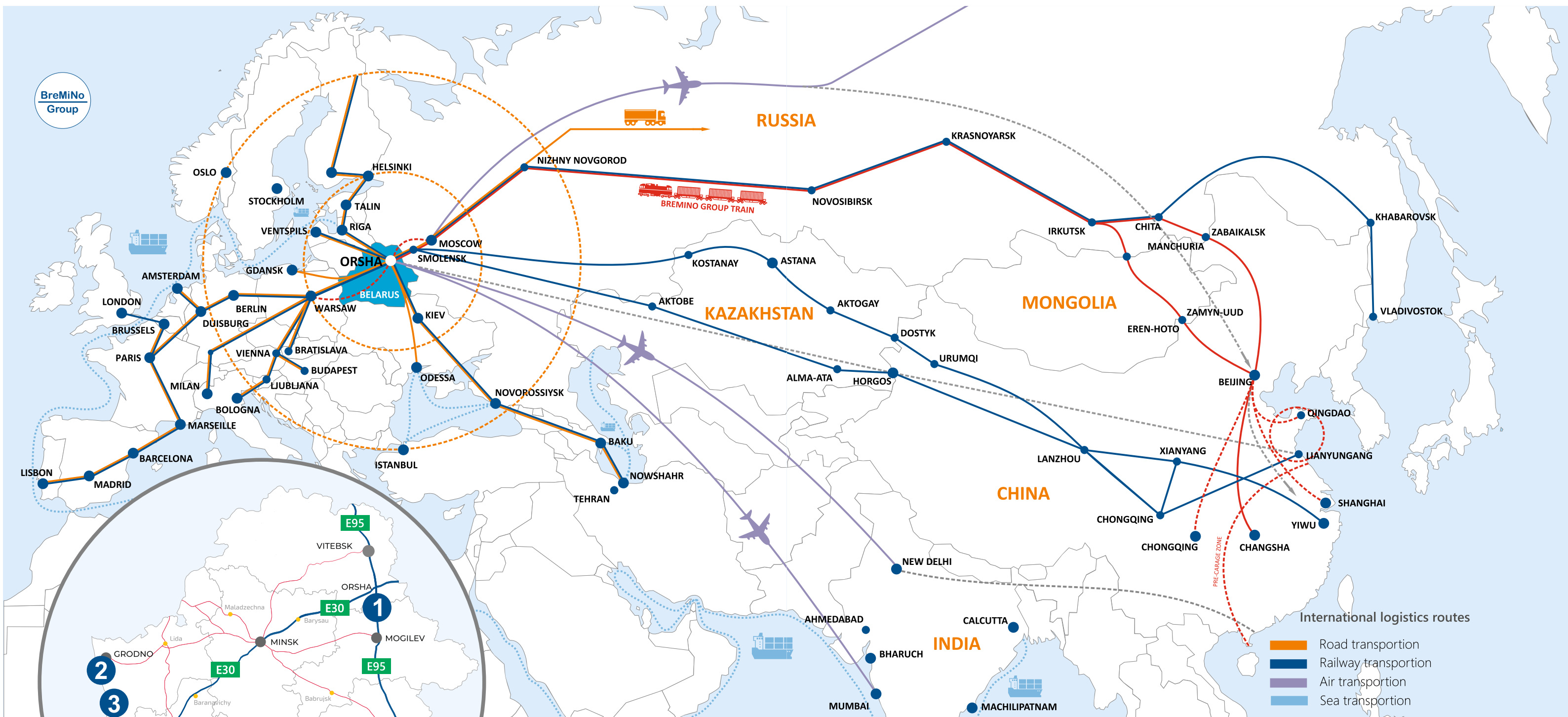
CONSOLIDATION & DECONSOLIDATION OF CONTAINER CARGO



CUSTOMS CLEARANCE PROCEDURES



WIDE RANGE OF LOGISTICS SERVICES



OUR PORT-PARTNERS:

Riga port - 600 km
 Klaipeda port - 700 km
 Ventspils port- 760 km
 Tallin port – 760 km
 Gdansk port - 950 km

BREMINO GROUP LOGISTICS NETWORK

- 1 BREMINO-ORSHA, MILC:**
 TOTAL AREA IS 230 ha.
 TYPE OF DELIVERY: by truck, by rail, by air
- 2 BREMINO-BRUZGHI, TLC:**
 TOTAL AREA IS 10 ha.
 TYPE OF DELIVERY: by truck
- 3 BREMINO-BERESTOVITSA, TLC:**
 TOTAL AREA IS 7.5 ha.
 TYPE OF DELIVERY: by truck

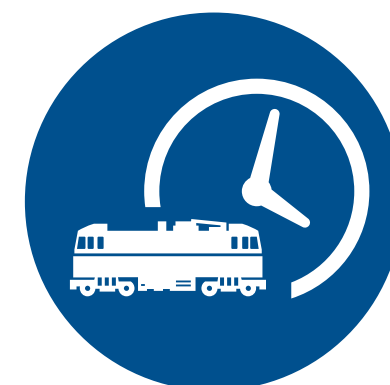
OUR TRAIN IS:



HIGH CUBE



FAST SERVICES



DELIVERY TIME
14 DAYS



FULL DOCUMENTARY SUPPORT



FAST DELIVERY TO **RUSSIA**

3



AIR TERMINAL - INTERNATIONAL CARGO AIRFIELD STATUS



E-COMMERCE WAREHOUSES



LOW TEMPERATURE WAREHOUSES



WAREHOUSES FOR CONSOLIDATION
OF FLOWERS - 7 000 M²



CAPABLE OF LANDING:
BOEING 747 AND A300 B4 AIRCRAFTS



SHOWROOMS (CASH&CARRY) AREA - 5 000 M²



PARKING FOR TRUCKS



ACCESS ROAD AND ENGINEERING INFRASTRUCTURE

5



One location
to reach two markets

INDUSTRIAL ZONE

POSSIBLE PRODUCTION

Packaging / repackaging (from industrial
packaging into commercial, branded packaging)
and complete setting of goods

Interior and home items production

**Production / packaging
of frozen berries / mushrooms /
vegetables**

Jewelry production

**Production / packaging
of canned vegetables/
fruit food**

**Sporting goods
production**

**Perfumes and cosmetics
bottling / packing**

**Medical and pharmacology
manufacture**

**Electronic manufacturing
(assembly)**

**Toys
production**

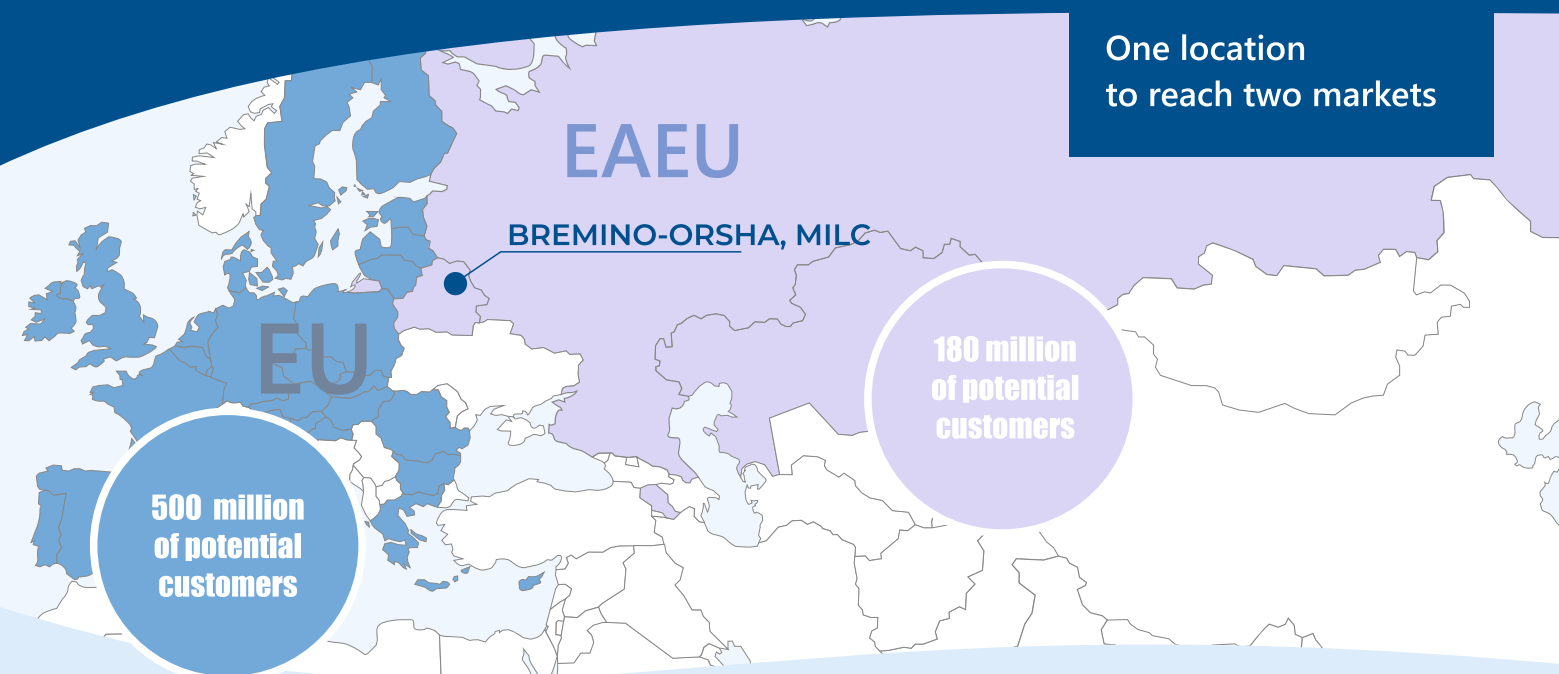
POTENTIAL
RESIDENTS
OF BREMINO-ORSHA



Silk Road International Trade Center is a new opportunities for **YOUR BUSINESS**



BUSINESS SECTOR



SEZ "BREMINO-ORSHA" ADVANTAGES:

- ✓ Modern infrastructure
- ✓ Multimodal logistics
- ✓ Preferences and benefits
- ✓ One location to reach two markets
- ✓ Full range of services
- ✓ Individual terms of cooperation with resident
- ✓ Full support for residents in the Republic of Belarus (assistance in contacts with state authorities, network of partners "Bremino Group")
- ✓ **"Resident to resident"** software appliances
- ✓ Highly qualified specialists
- ✓ Lease of land for **99 years**



PREFERENCES AND BENEFITS FOR RESIDENTS:

PREFERENCES	GENERAL TERMS	TERMS FOR BREMINO-ORSHA RESIDENT
Income tax	18%	0% - during 9 years, when the profit is declared;
Real estate tax	1 - 2,5%	0% - during 20 years;
Taxes on royalty	15%	5% during 10 years
Dividend tax	12%	0% during 5 years, when the profit is declared
Customs duty	Paid	0% - when implementing an investment project 0% - when exporting output products outside the EAEU
Import VAT	Paid	0% import VAT for: - imported equipment, components, raw materials when implementing an investment project - for imported trucks, aircrafts and railway vehicles
VAT	20%	refund of VAT during the project implementation period
VAT (for real estate transaction)	Paid	released until 2033
NSSF	28%	24% is to be paid for employees hired in Orsha region
Offshore tax	Paid	0%

5 STEPS TO BECOME A RESIDENT

- Step 1** FILL IN AN APPLICATION
- Step 2** PROVIDE THE STAMPED AND SIGNED COPY OF STATUTORY DOCUMENTS
- Step 3** PROVIDE COPY OF THE CERTIFICATE OF STATE REGISTRATION
- Step 4** PROVIDE BUSINESS PLAN OF THE INVESTMENT PROJECT IN RUSSIAN
- Step 5** PAY THE REGISTRATION FEE

BASIC CRITERIA FOR A RESIDENT

- 1** Minimum amount of investment is \$ 0.5 million, implementation period is 3 years
- 2** When more than \$ 5 million is invested, the implementation period is 5 years
- 3** Comply with the list of activities permitted in Bremino-Orsha SEZ